

Houston International Simmental/Simbrah Sale

March 7, 2017 • Tuesday, 7PM

Reliant Sale Arena • Houston Livestock Show

Sale Managed By: Roy Schwake
6105 CR 4524 • Athens TX 75752
(Cell) 214/542-8162
schwakecattle@aol.com



Auctioneer: Doak Lambert, Coppell, Texas

Schedule of Events:

Monday, March 6 Sale Cattle In
Tuesday, March 7 Sale Cattle In Place by Noon
View Sale Cattle All Day

6PM Pre-Sale Reception
Sponsored by Texas Simmental/Simbrah Assn & "Friends"

7PM "The International" Sale

Wednesday, March 8 Open Simbrah Show 8AM
Open Simmental Show 12:30PM

Publication Representatives:

Gulf Coast Cattleman • Southern Livestock Standard
Weekly Livestock Reporter

Sale Sponsored By



Texas Simmental/Simbrah Association
Greg Burden, President txsim@aol.com

Catalog Available Online . . .
www.texassimmentalsimbrah.com

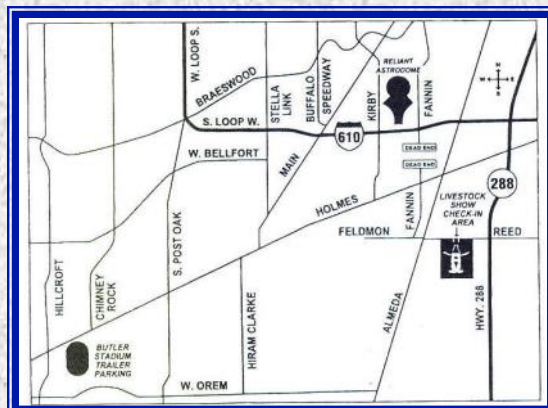
Sale will be broadcast live via internet . . .

DVAuction
Broadcasting Real-Time Auctions

www.dvauction.com

Sale Day Phones: Roy Schwake 214-542-8162

If you are unable to attend the sale we would be happy to handle your bids in strict confidence, direct them to a person of your preference or view the sale on the internet.



Buyer Parking . . . Buyers will be able to enter the Horse Gate off of the feeder road between Fannin & Kirby on IH 610. Tell the person at the gate that you are coming to the International Simmental/Simbrah Sale.

Sale Terms & Conditions

Cash or check unless other terms are pre-approved by Sale Manager, TSSA or owners. Each animal to be sold to highest bidder - the auctioneer will settle any dispute as to bids. All cattle are to be paid for by the purchaser during or immediately after the sale and will not be released until after settlement has been made through the sale manager or owner. Cattle will not be transferred until paid for in full.



All cattle sell under the Terms & Conditions set forth by the American Simmental Association (January 1, 2011) and the TSSA Approved Sale Guidelines.

Copies will be available sale day.

Herd Health: All cattle will have interstate health papers required for shipping into other sections of the U.S.

Announcements: All announcements at the sale by the sale manager, owners or auctioneer concerning the cattle will take precedence over statements in this sale catalog.

Liability: All persons attending the sale and related functions do so at their own risk. The TSSA and Schwake Cattle Services assume no liability, legal or otherwise, for any accidents or injuries that may occur. Information in this catalog is believed to be accurate but any updates or corrections will be on a supplement and/or announced from the block.

Hotel Headquarters • Holiday Inn NRG Park

For reservations contact: Sale Department

Telisa Edwards 713-576-5075

Latham Hill

Catalog Production



Welcome Simmental & Simbrah Breeders,

I would like to personally extend a warm welcome from our consignors for you to come and visit fellow breeders and view a unique International Sale offering. The Texas Simmental/Simbrah Association along with guest consignors from throughout the United States have joined forces to bring an excellent, stout set of cattle for you to analyze. The quality of Full Fleckvieh Simmental, Purebred Simmental and Simbrah runs very deep and the strength of the herdside prospects, open donor heifer prospects and front pasture replacement females should satisfy the most critical or elite breeder. Only at the "International" in Houston are you able to study and select from the top end of these categories!

I believe there can not be a more positive statement for the strength, acceptability, diversification and usefulness of SimGenetics in as many various categories as what our consignors have offered for your appraisal at the "International." Along with our live cattle offering, some of the most unique and hard to acquire Full Fleckvieh, Purebred Simmental and Simbrah embryos along with a limited amount of semen from these SimGenetics. Several semen packages on some of the most proven sires will only be available at the "International". The "International" truly will represent SimGenetics that work from Canada to Brazil.

I congratulate our consignors on their dedication to provide for your appraisal some of the most elite genetically and phenotypically correct cattle available in North America. We have been very strict and selective in the sale offering and have provided quality cattle of many categories.

If you have any questions regarding the cattle please contact the consignors, staff or myself. If I can be of any assistance, do not hesitate to call and remember we will be on DVAuction live for you to view and or buy in Houston.

Sincerely,

Roy Schwake (214)542-8162

Please study the offering closely and I would like to remind you again that in so many categories the "International" will be the only place to acquire some of the most proven genetics at public auction in 2017.

2017 International Sale Consignors

Coyote Creek Simmentals - Marvin Nix - 770-231-2712 - Dawsonville, Georgia
Lots 32A,32B,36A-G

Hallak Ranch - Billy Hallak - 903-203-8524 - Athens, Texas
Lots 5,7,8

JV Cattle Company - Jeff & Janet Vayon - 409-201-3146 - Winnie, Texas
Lots 25

Mitchell Lake Ranch - Jim Ethridge/Donna Adams - 979-255-2882 - Franklin, Texas
Lots 27,28,30,31,37A-H

Monte Christo Cattle Company - Jud & Margie Flowers - 956-207-2087 - Mission, Texas
Lots 9,10

Peach Creek Ranch - David & Hope Onstot - 512-818-3580 - Granger, Texas
Lot 4

Pine Ridge Ranch - Bill & Jane Travis - 214-850-6308 - Athens, Texas
Lots 1,2,11,12,13,14,20,21,22,23

Powell Simmental Simbrah - Robby Powell -214-215-6737 - Anna, Texas
Lots 6,19,24,26

S&S Cattle Company - Norg Sanderson - 605-226-2069 - Aberdeen, South Dakota
Lots 29A,29B,29C,33A,33B

Smith Farms - Ronnie & Susan Smith - 817-846-9438 - Denton, Texas
Lots 15,16

Strack Farms - Keith Strack - 281-455-5896 - Normangee, Texas
Lot 3,17,18

T5 Livestock Company - Larry Throgmorton - 903-461-1030 - Wolfe City, Texas
Lots 34A,34B,34C,35A,35B,35C,38A-K



Polled/Scurred Purebred Simbrah Bull

ASA#3,170,283

February 13, 2016 Tattoo: 453D LE

PRR Topline 327X

PRR Focus 310A #2,851,927

Mallett Miss Legacy P405

PRR Fusion 453D

PRR Rito 545W

PRR Whata Rita 270Z #2,742,191

PRR WhataPromise 938U

PRR Fusion 453D carries meat quality and tenderness genes . . . His sire, PRR Focus 310A is a top carcass and tenderness Simbrah bull. Moderate, well built, polled scurred, purebred!



CE	BW	WW	YW	MCE	MILK	MWW	CW	YG	Marb	BF	REA	API	TI
4	3	59	81	6	25	54	22	-0.25	.08	-0.057	.47	83	56

Polled Scurred Purebred Simbrah Bull

ASA#3,170,307

February 29, 2016 Tattoo: 507D LE

PRR Palisade 813T

PRR Alamo 690Y #2,636,889

PRR Etta 2S

PRR Bowie 507D

PRR Prevail 774S

PRR Miss Design 303X #2,551,983

PRR Miss Design 303X

PRR Bowie 507D . . . Your next herd bull? This young multi-generational, moderate, balanced, purebred Simbrah bull can benefit your genetics. Long, strong backed, deep flanked, spring of rib and a valuable pedigree.



CE	BW	WW	YW	MCE	MILK	MWW	CW	YG	Marb	BF	REA	API	TI
6	3	64	87	5	17	48	25	-.24	.00	-0.46	.58	85	57



Polled Purebred Simbrah Bull

ASA#3,181,200

April 2, 2016 Tattoo: D477 LE

Mr Strack W125

Mr Strack B375 #2,868,661

Ms Strack R655

Mr Strack D477

Bosque Blaylock P17

Ms Strack T942 #2,426,785

Ms Strack M334

This calf is red blaze-faced, polled and heavy boned. D477 has a great disposition and is very structurally correct.



CE	BW	WW	YW	MCE	MILK	MWW	CW	YG	Marb	BF	REA	API	TI
1	5	54	70	6	25	52	18	-0.18	-.05	-0.056	.25	68	47

4

Peach Creek Ranch ★ Granger, Texas
Dave & Hope Onstot 512-818-3560



HMO Devils Cut D4

Polled Purebred Simbrah Bull

ASA#3,210,500

March 29, 2016 Tattoo: HMO D4 LE

PRR Prevail 774S

HMO PRR Waylon Z4 #2,655,278

PRR Shania 312X

HMO Devils Cut D4

LHH Valentino 700T

PRR Valentine 75W #2,490,340

PRR Lily 719T

Fans of dark-hided, fluid moving, growth oriented Simbrahs take note! HMO Devil's Cut D4 is the athletic kind that understands his purpose. Long-spined, big footed and clean sheathed, he comes from a long line of champion genetics. His sire, HMO PRR Waylon was the 2013 AJSR Champion and is the son of the 2012 San Antonio Reserve Champion PRR Shania, now a legendary donor at Pine Ridge Ranch. Waylon has produced champions for Josh Evan and Hope Onstot. Make the cut with HMO Devil's Cut!

CE	BW	WW	YW	MCE	MILK	MWW	CW	YG	MARB	BF	REA	API	TI
2	5	62	91	5	21	52	31	-0.13	.03	-.057	.23	73	54

5

Hallak Ranch ★ Athens, Texas
Billy Hallak 903-203-8524



HR Monster D9

Polled Scurred 3/4 SM 1/4 BR Simbrah Bull

ASA#3,153,174

March 12, 2016 Tattoo: D9 LE

LN Cosmo X120

LMC Red Alert 5A/25 #2,771,671

LMC Titania 5H/369

HR Monster D9

IVR Roland T705

FFR Tammy #2,599,682

PAD Tafui SA T142

Half Fleckvieh red genetics on both sides! He goes back to BHR Gerik P709E and IVR Roland T705. This meat wagon Polled young herdsire prospect will work on any kind of cows. Guaranteed Breeder!

CE	BW	WW	YW	MCE	MILK	MWW	CW	YG	MARB	BF	REA	API	TI
1	6	53	72	4	25	51	23	-.18	.01	-.059	.27	724	51

6

Powell Simmental & Simbrah ★ Anna, Texas
Robby Powell 214-215-6737



Powell's Hot Tamale

Polled Purebred Simbrah Bull

ASA#3,200,607

October 13, 2016 Tattoo: 10D LE

McCrary Smith Inspired

McCrary Pistol 400B #3,002,105

Smith Hutto Tamster 14X

Powell's Hot Tamale

PRR Excellence 446P

PRRfect Daisy 7T #2,381,165

PRR Miss Light 012N

Hot Tamale is a solid red, future herdsire prospect who is big boned, big hipped and very thick throughout. He is a Smith Genetics Inspired son. His dam is a Pine Ridge Ranch female that was Champion at several major stock shows.

CE	BW	WW	YW	MCE	MILK	MWW	CW	YG	Marb	BF	REA	API	TI
4	3	58	79	9	29	58	21	-.23	-.06	-.057	.40	81	53



Homozygous Polled Open Purebred Simbrah

ASA#3,212,481

May 2, 2016 Tattoo: D12 LE

LN Cosmo X120

LMC Red Alert 5A/25 #2,771,671

LMC Titania 5H/369

HR Karma D12

SNF Rock N Belle N-23

SNF/ARM Ms Rock Star #2,565,238

SNF Miss Galadriel N-12

HR Karma goes back to HR Power House 1 and HR Memphis Belle . . . Both Grand Champions in major show. She is homozygous polled . . . Her grand-dam N12 is our elite producer and donor. Check our website www.hallakranch.com and see this family power!



Homozygous Polled

CE	BW	WW	YW	MCE	MILK	MWW	CW	YG	Marb	BF	REA	API	TI
3	4	50	66	5	22	46	15.1	-.21	-.07	-.052	.32	66	44

Polled Open Purebred Simbrah

ASA#3,181,194

May 6, 2016 Tattoo: D485 LE

LN Cosmo X120

LMC Red Alert 5A/25 #2,771,671

LMC Titania 5H/369

HR Mayflower D485

Ms Strack W125

Ms HR Strack Z334 #2,750,697

Ms Strack U47

Sired by LMC Red Alert 5A/25 who has produced females that have claimed titles . . . Her dam is a top quality female with a beautiful udder, solid red and double polled. This heifer looks like her and will make a big impact in any herd.



Polled

CE	BW	WW	YW	MCE	MILK	MWW	CW	YG	Marb	BF	REA	API	TI
3	4	47	64	5	22	45	13.7	-.19	-.01	-.055	.25	74	45



Polled Open Purebred Simbrah

ASA#3,026,850

September 18, 2015 Tattoo: C600 LE

Smith Satisfies

Smith McCrary Fireball #2,877,680

Smith McCrary Hi-Price

MCR Ms Ginger C600

PRR Mr Kool S1

WHR Ginger A121 #2,749,813

WHR Gretchen

Beautiful blaze-faced black nose daughter of Smith McCrary Fireball, sired by Smith Genetics premier senior herdsire Smith Satisfies. Dam is Pine Ridge Dynamite, a PRR Scout daughter and PRR Whata Dude is on dam's side. Powerful combination working well at Monte Cristo!



Polled

CE	BW	WW	YW	MCE	MILK	MWW	CW	YG	Marb	BF	REA	API	TI
4	3	57	75	8	23	51	19.3	-.28	-.09	-.068	.47	75	50

10

Monte Cristo Ranch ★ Mission, Texas
Jud & Margie Flowers 956-207-2087



MCR Ms Red Momma D843



Polled

CE	BW	WW	YW	MCE	MILK	MWW	CW	YG	MARB	BF	REA	API	TI
3	4	55	75	8	24	52	19.9	-30	-14	-0.85	.39	70	48

Polled Open Purebred Simbrah

ASA#3,080,012

February 28, 2016 Tattoo: D843 LE

Smith Evan

RFI Red Raider #2,799,907

RFI Red Miss Teddy Bear

MCR Ms Red Momma D843

LMC Redskin 5R/79

Ms Big Mama A68 #2,704,001

MCR Ms Cindy U692

Solid red heifer sired by the 2014 San Antonio Champion, Red Raider . . . Grandson of Smith Genetics primary donor cow, Bella Bella. Dam is sired by LMC Redskin . . .the son of legendary HR Power House.

11

Pine Ridge Ranch ★ Athens, Texas
Bill & Jane Travis 214-850-6308



PRR Pilgrim 008X



Polled

Sire of PRR Heartthrob 441D

CE	BW	WW	YW	MCE	MILK	MWW	CW	YG	MARB	BF	REA	API	TI
1	5	64	89	8	23	55	29.9	-21	-21	-0.63	.40	60	49

Polled Open Purebred Simbrah

ASA#3,169,614

February 10, 2016 Tattoo: 441D LE

PRR Whata Dude 536P

PRR Pilgrim 008X #2,586,450

PRR Ms Optima 11N

PRR Heartthrob 441D

PRR Rito 545W

PRR Lily 200Z #2,742,181

PRR Lily 719T

PRR Heartthrob 441D . . . Both grand dams are Pine Ridge Donor cows and both grandsires are Pine Ridge Herd sires. This heifer has 12 Donor cows and 15 Pine Ridge Herd sires in her pedigree. A wonderful multigenerational Simbrah cow.

12

PRR Dee Dee 443D



Polled

CE	BW	WW	YW	MCE	MILK	MWW	CW	YG	Marb	BF	REA	API	TI
5	5	74	102	7	18	55	36.9	-24	.09	-0.60	.59	90	63

Polled Open Purebred Simbrah

ASA#3,169,615

February 10, 2016 Tattoo: 443D LE

WS Beef Maker R13

PRR Preview 973Z #2,676,077

PRR Miss Optima 46R

PRR Dee Dee 443D

PRR Choice 565W

PRR Amy 314A #2,848,326

MS Whoopi X69

PRR Dee Dee 443D . . . WOW! CARCASS! BODY! She's yours to purchase and ready to breed.



Polled Open Purebred Simbrah

ASA#3,169,638

February 21, 2016

Tattoo: 488D LE

WS Beef Maker R13

PRR Preview 973Z #2,676,077

PRR Miss Optima 46R

PRR Delta 488D

PRR Paragon 318U

PRR Paragon Rita 214A #2,844,358

PRR Clarita 522P

PRR Delta 488D carries the genes for prime beef products. The sire, PRR Preview 973Z, is a son of WS Beef Maker who is perhaps the finest carcass bull whose semen is very scarce. Grandma, PRR Clarita 522P, was a #1 milking and meat cow and a Donor. Grandpa, PRR Paragon 318U, is successfully marketed world-wide by Semex . . . And a beautiful bull!!

PRR Delta 488D



CE	BW	WW	YW	MCE	MILK	MWW	CW	YG	Marb	BF	REA	API	TI
4	6	76	105	5	25	63	41	-.24	.09	-.038	.83	103	63

Polled Open Purebred Simbrah

ASA#3,169,647

March 1, 2016

Tattoo: 508D LE

PRR Ruler 447U

PRR Powerfull 22Z #2,658,365

PRR Bonnie 88W

PRR Miss Lizbeth 508D

PRR Whata Dude 536P

PRR Lizbeth 8T #2,408,426

PRR Miss Optima 215P

PRR Miss Lizbeth 508D is an excellent cow with a great pedigree. Her dam, PRR Lizbeth 8T, is a favorite of both Jane and Bart. PRR Miss Lizbeth 508D was named after our granddaughter. Her sire is the well named bull PRR Powerfull 22Z. PRR Miss Lizbeth is one of the best and ready to breed this April. She carries tenderness genes from Buzzard Hollow's BHR Doorn and Sally Buxkemper's RX Amarula.

PRR Miss Lizbeth 508D



CE	BW	WW	YW	MCE	MILK	MWW	CW	YG	Marb	BF	REA	API	TI
-1	6	72	98	4	17	53	36.3	-.27	-.29	-.086	.47	46	49



PRR Perseus 737B

Sold to Southern Cattle Company, Marianna FL \$10,000



WHR Red Rose B130

Sold to Carlos Rascon, Mexico \$9,250

15

Smith Farms ★ **Denton, Texas**
 Ronnie Smith 817-846-9438



Polled Open Purebred Simbrah

ASA#3,192,102

April 10, 2016 Tattoo: 162D LE

LMC Johnnie Walker 5R179

LMC RFI Smith Uno #2,487,537

LM She Moves 3L/136

Smith Farms Dreamatic

Mr NLC Upgrade U8676

LMC Brooke 3B/162 #2,938,863

LMC WFC Ms Dream Girl

Primo pedigree makes this heifer an excellent herd prospect. A granddaughter of Dream girl, Victor Guerra just sold a part sister from this cow family in the Black Label sale for \$50,000. With impeccable bloodlines, long spine and a beautiful head and neck, this heifer will make money for you.

CE	BW	WW	YW	MCE	MILK	MWW	CW	YG	MARB	BF	REA	API	TI
3	4	72	102	5	13	50	36	-28	.08	-.054	.77	93	67



Polled Open 3/4 SM 1/4 BR

ASA#3,132,971

April 20, 2016 Tattoo: X10D LE

Smith McCrary Andy Black

Smith William in Black #2,567,962

SVF Gold Dust R770

Smith Farms Ice Cream

LMC Johnnie Walker 5R179

RSUN Cookies N Cream #2,548,463

Shes All That S10

Beautiful potential show heifer that is wide topped, long spined and has excellent hair and feet. Her dam has been one of our best producers with over \$42,000 worth of calves in the last few years. Her sweet and wonderful disposition makes her truly a pleasure to work with.

CE	BW	WW	YW	MCE	MILK	MWW	CW	YG	MARB	BF	REA	API	TI
7	2	60	80	6	17	47	21	-.30	.10	-.050	.66	103	58

Houston International Simmental/Simbrah Sale

		Gross	Average
February 19, 2002	26 Lots	\$106,550	\$4,098
February 27, 2003	34 Lots	\$75,900	\$2,232
March 3, 2004	25 Lots	\$99,675	\$3,987
March 1, 2005	30 Lots	\$152,550	\$5,085
February 28, 2006	34 Lots	\$188,725	\$5,551
February 27, 2007	38 Lots	\$146,200	\$3,843
March 4, 2008	31 Lots	\$178,875	\$5,770
March 3, 2009	30 Lots	\$128,575	\$4,286
March 2, 2010	34 Lots	\$112,825	\$3,318
March 1, 2011	32 Lots	\$107,725	\$3,366
February 28, 2012	22 Lots	\$118,600	\$5,349
February 26, 2013	41 Lots	\$201,175	\$4,907
March 4, 2014	37 Lots	\$134,490	\$3,635
March 3, 2015	31 Lots	\$153,770	\$4,960
March 1, 2016	57 Lots	\$212,875	\$3,735





Polled Open Purebred Simbrah

ASA#3,181,198

March 10, 2016 Tattoo: D480 LE

Mr Strack W125

Mr Strack B375 #2,868,661

Ms Strack R655

Ms Strack D480

Mr Strack J47

Ms Strack M305 #2,164,882

Ms Strack K73

This beautiful, red, blaze-faced, polled heifer has great maternal traits, as her dam is 15 years old and pregnant with another calf. Her granddam R655 is also still in our herd at 12 years of age. This heifer will be a positive addition to your herd in any ways!



Ms Strack D480



CE	BW	WW	YW	MCE	MILK	MWW	CW	YG	Marb	BF	REA	API	TI
2	4	54	69	7	23	50	15.8	-.18	-.08	-.058	.20	66	47

Polled Open Purebred Simbrah

ASA#3,181,195

April 27, 2016 Tattoo: D483 LE

Mr Strack Y254

HR Mega Red #2,919,219

MM Miss Nike

Ms Strack D483

Mr Strack Y294

Ms Strack B394 #2,914,150

Ms Strack Z216

D483 is solid red, polled, easy keeping and very gentle. We purchased her sire HR Mega Red here at the Houston sale two years ago and he is doing a great job. Her dam is a 1st calf heifer with a great udder and teats and you can see what she produced! Take a look!



Ms Strack D483



CE	BW	WW	YW	MCE	MILK	MWW	CW	YG	Marb	BF	REA	API	TI
6	3	58	79	8	22	51	21.3	-.25	.02	-.066	.43	91	54



Polled Open Purebred Simbrah

ASA#3,200,608

October 3, 2016 Tattoo: 11D LE

McCrary Smith Inspired

McCrary Pistol 400B #3,002,105

Smith Hutto Tamster 14X

Powell's Lucy

PRR Red Ammo 506P

PRR Sheza Dilly 703T #2,409,806

PRR DQ 808J

Powell's Lucy is a very stylish, solid red, purebred Simbrah heifer that will be very thick throughout. She is very docile, halter broke and really catches your eye. Lucy will make a great show heifer and a wonderful cow in someone's herd. She originates from two great programs, her sire is a Smith Genetics Inspired son and her dam is Pine Ridge Ranch genetics. Her dam was a very successful show heifer winning many championships throughout her show career. Don't miss this opportunity!!



Powell's Lucy



CE	BW	WW	YW	MCE	MILK	MWW	CW	YG	Marb	BF	REA	API	TI
7	2	59	81	8	22	51	20.5	-.29	-.08	-.088	.35	88	54



Pine Ridge Ranch is celebrating our 40th year with Sim-Genetics!

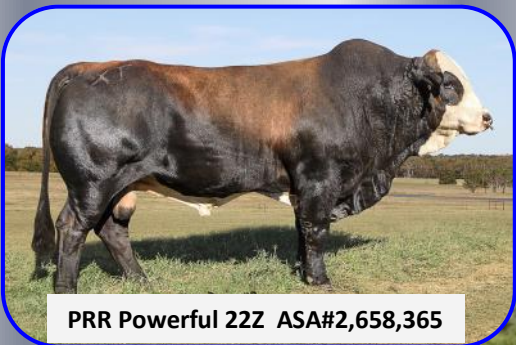
The focus of Pine Ridge is to develop the most efficient, tender, quality carcass, hot weather cattle In the world. We produce non-line bred, high heterosis, cattle that will raise a big calf on mother's milk . . . And continue to rapidly grow in the feedlot . . . And produce a carcass that we believe is more valuable than Angus. A tender Choice to Prime carcass 1400# at 16 months, Yield Grade 1, 2 and 3. We have basically eliminated higher cost, less efficient, Yield Grades 4 and 5 cattle, and have no demonstrated genetic defects.

The #1 Pick of 90 Fall 2016 Bull Calves

We are offering the pick of **90 Pine Ridge Ranch bull calves born on the ranch in the Fall of 2016**. We are opening the doors and inviting you to purchase our best. Visiting Pine Ridge should be fun so plan on staying in our guest house.

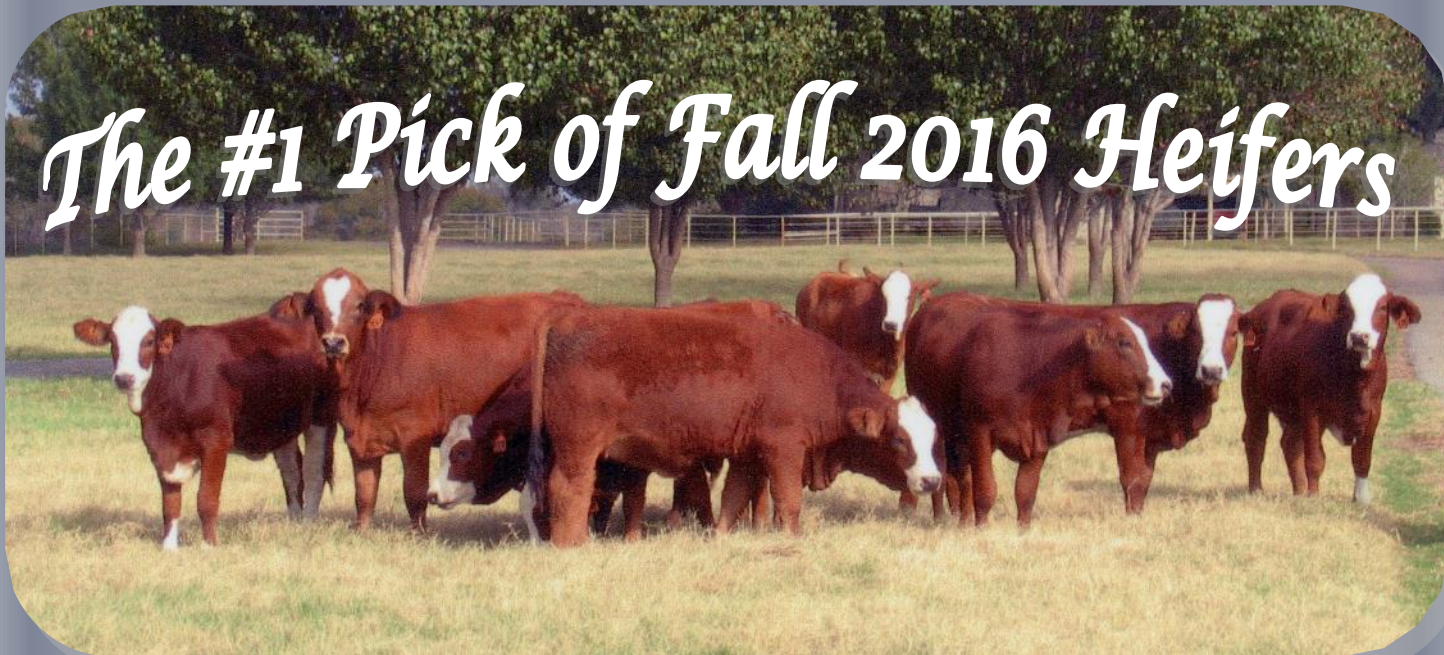
The next morning, Jane & I will show you over 300 Simbrah calves nursing on their mamas . . .
 It is an awesome site!

Pine Ridge will collect 100 straws of CSS International Semen on the bull chosen. Pine Ridge will pay all costs of collection. Dates for collection will be at the option of PRR but scheduled to minimize conflicts with the purchaser's schedule. We ask that you make your selection by March 19, 2017.





The #1 Pick of Fall 2016 Heifers



We are offering the pick of our **Pine Ridge Ranch heifer calves born on the ranch in the Fall of 2016**. If you are looking for a wide genetic selection, extraordinary carcass quality or a future donor cow you will be buying the best with this purchase.

Jane and I invite you to spend time on the ranch selecting the best heifer for your program. We ask that you make your selection by March 19, 2017.



TX



22

Pine Ridge Ranch ★ Athens, Texas
Bill & Jane Travis 214-850-6308



PRR Dale 468D



Polled Open 3/4 SM x 1/4 BR Simbrah

ASA#3,169,678

February 16, 2016 Tattoo: 468D

SVF Steel Force 5701

MM Steely Dan #2,764,190

Ive Got Rhythm

PRR Dale 468D

PRR Whata Dude 536P

Ms Whoopi X69 #2,564,667

MCR Twila U656

Thanks to Mike and Sandy Scheu for selling the MM Steely Dan bull to Pine Ridge. Steely Dan is a tremendous, solid red, heavy muscled purebred Simmental bull. PRR Dale 468D is an excellent, polled 3/4 x 1/4 heifer with a great outcross pedigree.

CE	BW	WW	YW	MCE	MILK	MWW	CW	YG	MARB	BF	REA	API	TI
3	5	63	86	6	15	47	28	-26	-18	-.071	.47	84	54

23

D802



Horned Open 3/4 SM x 1/4 BR Simbrah

ASA#3,172,089

February 16, 2016 Tattoo: D802 LE

PRR Pilgrim 008X

PRR Parade 168A #2,771,187

PRR Candie 066Y

D802

Bar 5 FF Right Way 1214X

JE Zola J12Z #2,647,064

BHR Jolanta P246

D802 is an excellent, one half Fleckvieh, 3/4 x 1/4 Simbrah . . . About as good as it gets. Larry Throgmorton bred this heifer to the Pine Ridge Herd sire, PRR Parade 168A . . . With great results! Moderate with meat and milk! You may rename this great heifer upon transfer to your ranch.

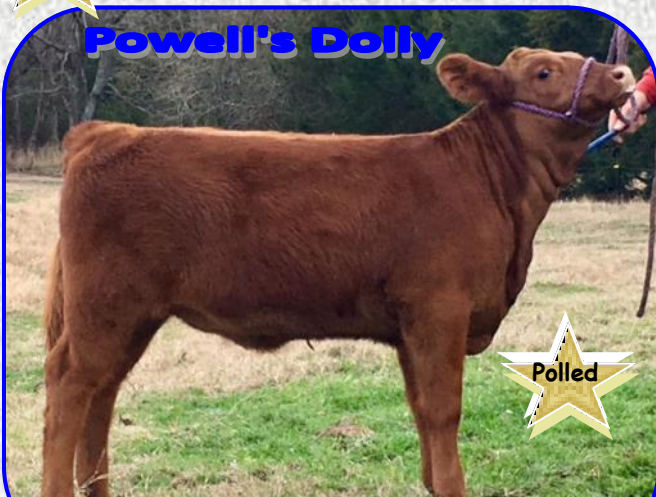
CE	BW	WW	YW	MCE	MILK	MWW	CW	YG	MARB	BF	REA	API	TI
3	3	58	76	10	28	57	19.5	-25	-.35	-.064	.41	78	49

24

Powell Simmental & Simbrah ★ Anna, Texas
Robby Powell 214-215-6737



Powell's Dolly



Polled 3/4 SM x 1/4 BR Simbrah

ASA#3,200,609

September 28, 2016 Tattoo: 12D LE

McCrary Smith Inspired

McCrary Pistol 400B #3,002,105

Smith Hutto Tamster 14X

Powell's Dolly

PRR Excellence 446P

Scarlett #2,428,208

Black Melvis

Powell's Dolly is a very clean-fronted, deep cherry red, 3/4 x 1/4 Simbrah heifer with lots of potential. She is out of a Smith Genetics Inspired son, and her dam's bloodline goes back to Pine Ridge Ranch genetics. Dolly is halter and stick broke and will make a great show heifer.

CE	BW	WW	YW	MCE	MILK	MWW	CW	YG	Marb	BF	REA	API	TI
4	3	54	70	9	29	56	14.7	-28	-.02	-.069	.40	87	57



JV Cattle Company ★ **Winnie, Texas**
 Jeff & Janet Vayon 409-201-3146



Selling a Flush . . . 3/4 SM x 1/4 BR Simbrah

CNS Dream On L186
 Mr Double S R925 #2,364,959
 DS Ms Zinger 190F

JVCC Jolie B104 #2,875,308 April 11, 2014

PRR Scout 002N
 PRR Pristine Jewel 11W #2,490,334
 PRR Glo Babe 64M

Guarantee of four (4) embryos.
 Buyer receives all embryos from the flush with minimum of 4 embryos. Flush work must be done by certified embryologist . .

What a Beauty! We are offering a flush out of this outstanding cow, JVCC Jolie. Jolie has been a joy to work with, gentle, moderate, beautiful fronted, tremendous depth of body, sound as the day is long and the type and kind Bill Travis loves! Always a class winner and many times Champion. Jolie is due to calf around sale day to KSSR Milestone. She currently has an outstanding bull calf that will be exhibited in the Houston Open Show. Jolie's sire is a Dream On Son and dam goes back to a Pine Ridge heifer, PRR Pristine Jewel. JVCC Jolie was JR. Calf Champion in the ARB Div. at the 2015 Houston stock show, then in 2016 the Sr. Heifer Champion in the ARB Div. at Houston and the 2016 Sr. Champion in the San Antonio Percentage Simbrah Simmental Super Bowl.



CE	BW	WW	YW	MCE	MILK	MWW	CW	YG	Marb	BF	REA	API	TI
8	3	54	77	9	26	53	20	-.31	-.07	-.046	.76	100	56



Powell Simmental & Simbrah ★ **Anna, Texas**
 Robby Powell 214-215-6737



Polled Open Purebred Simmental

ASA#3,134,114
 February 24, 2016 Tattoo: 1D LE
 HTP/SVF Duracell T52
 SS/PRS High Voltage 244X #2,571,740
 KENCO Miley Cottontail

Powell's Casablanca

Meyer Ranch 734
 Double W She's A Meyer #2,572,523
 LHT Ms Hidden Power 21R

Powell's Casablanca is a thick-ended, deep sided Purebred black Simmental heifer. She showed at 2017 Fort Worth, is entered in Houston after the sale. Casablanca's sire was the Grand Champion bull at the American Royal and her dam is a Meyer 734 daughter. She is also the full sister to our outstanding show heifer, Maggie a champion many times. This is the first full sib to Maggie that we have offered for sale . . . This is an opportunity to purchase genetics never offered before. Great opportunity!!



CE	BW	WW	YW	MCE	MILK	MWW	CW	YG	Marb	BF	REA	API	TI
5	2	58	74	5	15	44	16.4	-.38	.05	-.066	.77	104	61



Mitchell Lake Ranch ★ **Franklin, Texas**
 Jim Ethridge/Donna Adams 979-255-2882



Horned Open Purebred Simmental

ASA#3,223,643
 February 15, 2016 Tattoo: J37D LE
 Siegfried
 JE Becker 315A #2,960,508
 Crimson Miss Lady Keona

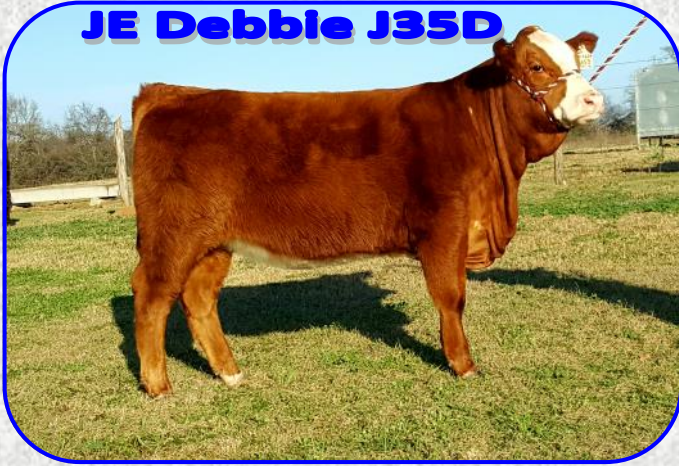
JE Donna J37D

Gibbys Ultimate 29S
 DDD Ultimates Wish 17W #2,534,526
 ProStock Aspen 4101P

J37D is an open, horned, red Purebred Simmental sired by JE Becker 2315A. Donna has a long spine and level hip that adds to her great maternal look. This powerful purebred has a great disposition with a long productive life ahead of her. Donna's dam is DDD Ultimate's Wish 17W, a Gibby's Ultimate daughter.



CE	BW	WW	YW	MCE	MILK	MWW	CW	YG	Marb	BF	REA	API	TI
6	5	70	94	11	26	61	32	-.26	-.23	-.072	.53	86	59



Horned Open SimAngus

ASA#3,223,642

February 17, 2016

Tattoo: J35D LE

Siegfried

JE Becker 315A #2,960,508

Crimson Miss Lady Keona

JE Debbie J35D

624 (Commercial Black Angus)

J35D is an open, horned, red percentage Simmental. Debbie is registered as a 50% Simmental female out of a commercial Black Angus cow and her sire is JE Becker 315A. This streak faced female has added volume combined with power in a moderate package.

CE	BW	WW	YW	MCE	MILK	MWW	CW	YG	Marb	BF	REA	API	TI
9	3	68	96	10	25	59	31	-.11	.05	-.036	.33	106	62



6 Polled Purebred Simmental Embryos

Circle S Leachman 600U

LRS Preferred Stock 370C #1,666,898

LAS Miss Princess 020Z

SRS Franchise F601 #1,901,352

Meyers Black Power

BDV Black Dove D44 #1,748,810

Koeplin Ranch 850

Mr Clean

Polled Stretch #520,611

MBI Miss 53H

KTS Miss Ebony Eyes 420 #1,910,669

Switz Pol Deep Red

Ms KTS Deep Bold 4205 #1,756,801

Ms KTS Bold Image 205

Guarantee 3 pregnancies if work is performed by approved embryologist



5 Polled Purebred Simmental Embryos

Emmons Black Hercules

3C Wally C240 Blk #1,716,917

3C Crocus 9278 BL

Leachman Hairpin 7306H #1,979,421

Burns Bull X339U

LSF Whisper D49 #1,763,938

LBR Miss A-139

Mr Clean

Polled Stretch #520,611

MBI Miss 53H

KTS Miss Ebony Eyes 420 #1,910,669

Switz Pol Deep Red

Ms KTS Deep Bold 4205 #1,756,801

Ms KTS Bold Image 205

Guarantee 2 pregnancies if work is performed by approved embryologist



3 Polled Purebred Simmental Embryos

Nichols BLK Destiny D12

Nichols Legacy G151 #1,937,373

Nichols Debra D81

Ellingson Legacy M229 #2,171,761

LRS Preferred Stock 370C

Ellingson Ms PStock K58 #2,085,283

Ellingson BL Cloud D458

WLE Power Stroke

HC Power Drive 88H #1,991,642

Kappes Lady Irish F88

Zeis Miss Drive N423 #2,193,941

SRS Fortune 500

Zeis Miss Fortune J79 #2,025,277

Zeis Miss Raven D74

Guarantee of 1 pregnancy if work is performed by approved embryologist



Horned Open Full Fleckvieh Simmental

ASA#3,223,640

January 29, 2016

Tattoo: J13DLE

Sibelle Dirty Harry 25Z

PHS Backbone 323B #2,936,020

PHS Yawl Trix

JE Della J13 D

JRR Raffles P58M

DDD Pol Peekaboo S55 #2,435,506

IVR Peke N30

JE Della is an open, horned, solid red Fullblood Simmental. Della adds extra growth and performance along with a long level top. She is a big hipped, super feminine, and good footed female. Della is sired by PHS Backbone 323B and is out of a polled Raffles daughter with her maternal grandsire being DDD Broadway.



CE	BW	WW	YW	MCE	MILK	MWW	CW	YG	Marb	BF	REA	API	TI
0	6	71	101	5	33	69	38	-.24	-.20	-.077	.48	79	58

Horned Open Full Fleckvieh Simmental

ASA#3,223,644

February 19, 2016

Tattoo: J38D LE

Siegfried

JE Becker 315A #2,690,508

Crimson Miss Lady Keona

JE Dixie J38D

DDD Broadway G534

JE Xenie J36X #2,622,501

DDD Ms Utopia 22U

J38D is an open, horned, red Fullblood Simmental female from Mitchell Lake Ranch. JE Becker 315A is also her sire. Dixie is the daughter of JE Xenie J36X which is out of DDD Broadway. Xenie's dam is an Exodus/Yankee Nancy daughter. This baby doll heifer is soft-made through her fore rib and flank, which adds extra width down her spine. Dixie is big footed with a great disposition. Take a second look at this great Fullblood!



CE	BW	WW	YW	MCE	MILK	MWW	CW	YG	Marb	BF	REA	API	TI
3	6	54	76	11	31	58	24	-.25	-.24	-.076	.34	81	48



Sold to Jose Martinez, Mexico



Sold to Jose Martinez, Mexico



A 3 Horned Full Fleckvieh Simmental Embryos

1 grade #1 & 2 grade #2 Embryos (Glycerol)

Siegfried

SH Romulus F53R #912,941

MillHill Flower

DDD Broadway G534 #1,986,690

SRF Mr Bigfoot S138

Klondike Kim GNM 402B #1,692,925

SIM-ROC Gwen

C&B Western

BEL C&B Western 2nd #1,036,297

Adrian

DDD Winalady #1,923,154

Klondike Arnie GNM 250Z

HVR Winifred 343D #1,797,015

Hacks Fraulein

Guarantee 1 pregnancy if work is performed by approved embryologist

DDD Winalady is C&B Western 2nd daughter out of HVR Winifred. I have had bulls and heifers from both sets that turned out to be really good. A Broadway heifer of this mating sold for around \$8,000 in a Quest sale and we sold one in the Federation Sale at Huntsville that year.

B 6 Horned Full Fleckvieh Simmental Embryos

6 grade #1 Embryos (One Step Direct Thaw)

Kykso Bano

Overall Birner CN#8633683

Overall Selly

BHR Doorn G629E #1,964,533

Wisp-Will Mandrake 4th

Wisp-Will Petal CN#8633710

Ru-DEV Pam

C&B Western

BEL C&B Western 2nd #1,036,297

Adrian

DDD Winalady #1,923,154

Klondike Arnie GNM 250Z

HVR Winifred 343D #1,797,015

Hacks Fraulein

Guarantee 3 pregnancies if work is performed by approved embryologist

DDD Winalady is C&B Western 2nd daughter out of HVR Winifred. I have had bulls and heifers from both sets that turned out to be really good. A Broadway heifer of this mating sold for around \$8,000 in a Quest sale and we sold one in the Federation Sale at Huntsville that year.



DDD Broadway G534



BHR Doorn G629E



S&S Cattle Company ★
Norg Sanderson

Aberdeen, South Dakota
605-226-4592



A 5 Horned Full Fleckvieh Simmental Embryos

Guarantee 2 pregnancies if work is performed by approved embryologist

All Embryos are Direct Thaw and stored at Champion Genetics

Haxur
Laki CN#1647571
Erni

RHY Red Patron 77E #1,844,024

BEL C&B Western 2nd
Great Guns Rachel 29X #1,940,453
Miss Knight 155S

Hamlet
Brittas Funder CN#0399966
Marabell

RHY Neina 73C #1,706,322

SH Romulus F53R
RHY Zenobia 36Z #1,544,024
Great Guns Rachel 29X

B 2 Horned Full Fleckvieh Simmental Embryos

Guarantee 1 pregnancy if work is performed by approved embryologist

All Embryos are Direct Thaw and stored at Champion Genetics

Kysko Kalan
Kysko Kalger CN#8734022
Kysko Gerdi

Bar 5 Kalger 402J #2,047,677

Toverberg Karoo 83
Niemandia Klein-Karoo CN#8734021
Kalkdam Kleinnot 86

Hamlet
Brittas Funder CN#0399966
Marabell

RHY Neina 73C #1,706,322

SH Romulus F53R
RHY Zenobia 36Z #1,544,024
Great Guns Rachel 29X



T5 Livestock Company ★
Larry Throgmorton

Wolfe City, Texas
903-461-1030



A 3 Horned Full Fleckvieh Simmental Embryos

Guarantee 1 pregnancy if work is performed by approved embryologist

All Embryos are Direct Thaw and stored at Champion Genetics

Egon
Egmar #7287799
Elrika

Antonius #0613074

Satin
Anka #7567227
Amsel

Baldo
Balist #1634933
Times

Ms JMC Silbe D435 #1,801,731

Morello
Silber #1746492
Salzburg

B 3 Horned Full Fleckvieh Simmental Embryos

Guarantee 1 pregnancy if work is performed by approved embryologist

All Embryos are Direct Thaw and stored at Champion Genetics

Sultan
Siegfried #0146340
Biene

SH Romulus F53R #0912941

Panzer
MillHill Flower #0403878
Gulla

Paros
Great Guns McGunster 17A #1,559,595
Bianka

Ms J McGunster C343 #1,733,441

Bold
SIM-ROC Gwen #1,733,392
SIM-ROC Golda

C 3 Horned Full Fleckvieh Simmental Embryos

Guarantee 1 pregnancy if work is performed by approved embryologist

All Embryos are Direct Thaw and stored at Champion Genetics

Hannes
Hamlet #0146341
Dulli

Rickardstown Jumbo #1,095,771

Pluto
Irla #7958461
Irla

BEL C&B Western 2nd
Great Guns Moses 50 D #1,843,842
Miss Knight 155S

DDD Winistar #2,043,028

Klondike Arnie GNM 250Z
HVR Winifred 343D #1,797,015
Hacks Fraulein

Semen Packages

35 A B C T5 Livestock Company

Larry Throgmorton 903-461-1030

DDD Broadway G534 #1,986,690

Horned Full Fleckvieh Simmental Bull

Selling 30 units in increments of 10

A . . 10 units B . . 10 units C . . 10 units

Only semen to sell at public auction in 2017!



DDD Broadway G534

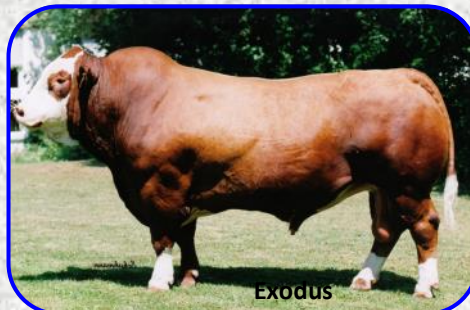
36 A-G Coyote Creek Simmentals

Marvin Nix 770-231-2712

A	Bar 5 SA Harrach 801P	#2,335,445	4 units
B	Bar 5 SA Stimulation 415P	#2,274,526	8 units
C	BFP Bolagi N522E	#2,219,113	9 units
D	Exodus	#2,307,290	13 units
E	GPCC Hafkenburg 8F	#1,903,190	5 units
F	Holb	#1,180,024	2 units
G	Klondike Arnie GNM 250Z	#1,503,939	5 units



BFP Bolagi N522E



Exodus



Bar 5 SA Harrach 801P

37 A-H Mitchell Lake Ranch

Jim Ethridge 979-255-2882

A	BHR Doorn G629E	#1,964,533	2 units
B	Faust	#T20957	4 units
C	Hockenhull Magnum	#113577	2 units
D	Klondike Goldrush 418B	#1,677,261	10 units
E	Malus	#1,659,778	2 units
F	Roonik	#2,335,580	5 units
G	Sunny Valley Sargent 24S	#2,390,219	9 units
H	Triple SP Stromer	#1,824,567	2 units



BHR Doorn G629E



Sunny Valley Sargent 24S

38 A-K T5 Livestock Company

Larry Throgmorton 903-461-1030

A	Anchor T Impact	#2,545,940	6 units
B	Anchor T Supreme	#2,194,034	10 units
C	Anchor T Supreme	#2,194,034	10 units
D	Great Guns Ferdinand 13Z	#1,540,427	2 units
E	Klondike Arnie 250Z	#1,503,939	8 units
F	Klyber	#2,388,201	5 units
G	MFI Whistler 47L	#2,280,357	5 units
H	MFL Bossman SA	#1,567,308	10 units
I	MFL Bossman SA	#1,567,308	10 units
J	PRL Porterhouse Regent	#1,776,689	10 units
K	Triple SP Stromer	#1,824,567	3 units

Sale Notes